



A2

Golf Mode Quick Guide Book

For detailed information
on the product, visit the
website of Voice Caddie.

www.voicecaddie.com



How to Set-up Time (Manual)

Touch the Set-up menu  on the menu screen



① Touch Time on the screen



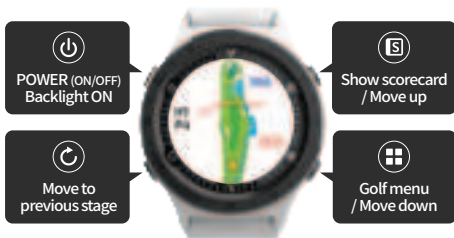
② Date Setting

- Swipe up or down to select year / date
- Touch the bottom V when setting is completed.

Key Buttons

- Power On/Off: Press and hold the POWER button for at least 3 seconds

▶ Full Touch Screen



How to Set-up Time (Manual)



③ Set-up time format

* Touch up to select between 12 or 24 hours



④ How to set-up time

* Set time and minutes by swiping up or down on your screen.

* Push up or down to set AM or PM.

* Touch the bottom V when setting is completed.

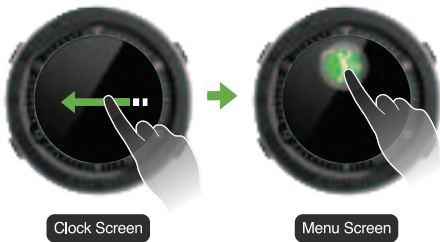


⑤ How to set up daylight saving time (DST)

* Touch ON or OFF.

How to Move to Golf Mode

- Enter the Menu Screen by swiping the clock screen to left ←, and on Menu Screen, touch the 'Golf Mode' icon.



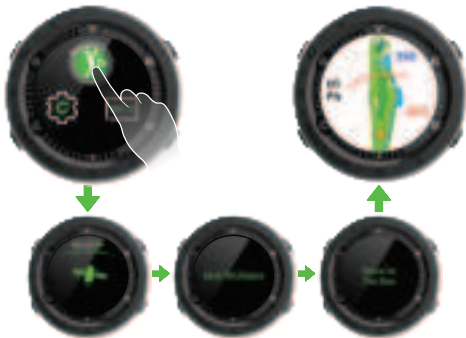
Guide to 'Smart Course View, Smart Green View and Distance Guide' Screen

- In Smart Course View, swipe left (←) enter 'Smart Green View'
- In Smart Course View, swipe right (→) enter 'Distance Guide'



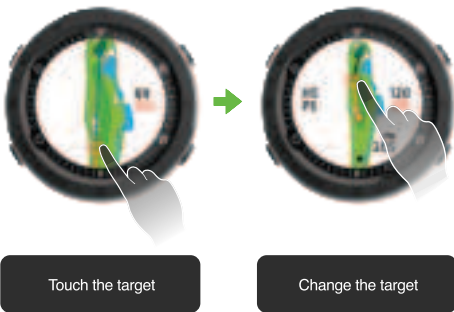
Detect Golf Course & Hole

When the 'Golf Mode' icon is touched, GPS is updated to detect the hole automatically.



How to Use User IP

- Touch your target on the screen to get distance To that specific location on the course



How to Use Pin Reload

- If you touch the screen where your desired pin is located, the pin location changes.



Touch the pin
location to change it

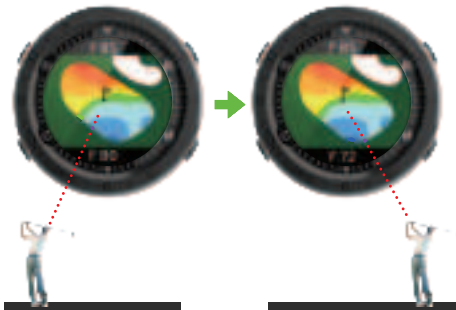
Change pin location

* The image of Greenview golf course above can be different from the real one.



How to Use Active Green View

- The angle of the green automatically changes based on the players location on the hole.



How to Set-up Time (Automatic)

- Automatic setting (only available outdoors)

Touch the Golf Mode  on the menu screen



Automatic GPS reception
when Golf Mode is selected

How to Reset



Pressing both buttons simultaneously will reset and turn off.



The small hole on the side of the watch is **not reset button**.

Pressing with a pointed object can cause damage and is not designed to be pressed.

- Warranty Conditions -

One Year Limited Warranty

Voice Caddie warrants this hardware product against defects in materials and workmanship for a period of one year from the date of original purchase. If a defect exists, at its option Voice Caddie will (1) repair the product at no charge, (2) exchange the product with a product that is new or like-new and is at least functionally equivalent to the original product, or (3) refund the purchase price of the product. Voice Caddie shall have no obligation to repair, replace or refund until the customer returns the defective product to Voice Caddie. This warranty does not apply: (1) to damage caused by accident, abuse, misuse, misapplication, or non-Voice Caddie products; (2) to damage caused by service performed by anyone who is not a Voice Caddie Authorized Service Provider; or (3) to a product or part that has been modified without the written permission of Voice Caddie. For more information on Voice Caddie's warranty and return policy, please visit www.Voicecaddie.com

- Notes -

- * The time required to capture GPS satellite signals while in golf mode may vary depending on the environment (weather, topography).
- * The battery's usage time may be reduced during rounds played in cold weather and in areas where satellite reception is poor. It is recommended that you turn the GPS power on once you are outside and ready to begin your round to extend usage time. Do not leave the device in vehicles as extremely hot temperatures may cause damage.
- * Do not leave the product in vehicles in hot temperatures or humid places as damage may occur.
- * Watch features will not be operational when the battery is being charged.

- Warranty Conditions -

Product Name	VOICE CADDIE A2		
Serial Number			
Date of Purchase		Full Name	
Purchase's Address		Telephone	
Warranty Period	One year after the date of purchase (other components are 6 months)		

Battery life	<ul style="list-style-type: none">· Regular Watch Mode : 9-10 days· Golf Mode : 10 hours
--------------	---

- Warranty Conditions -

Responsible Party – U.S. Contact Information

Street Address : 13951 Valley View Ave.

City, State : La Mirada, CA

Postal Code : 90638

United States : United States

Telephone number : 562-926-3978

Internet contact information : support@voicecaddie.com



VOICE CADDIE

www.voicecaddie.com