

# T11<sub>PRO</sub>

Quick Manual



User's Guide

Scan the QR code with  
your smartphone to download.

If you are not connected to a Wi-Fi,  
data charges may apply.



VOICE CADDIE

## How to download MyVoiceCaddie App

---



MyVoiceCaddie App QR code  
for the download link



Android



iOS

1. Search MyVoiceCaddie in App Store / Play Store.
2. Download and run.
3. Log in or join if you do not have an account already.
4. Touch the watch face.
5. Check matching codes on your device and the app and connect by touching Confirm on your device.

# Golf Mode

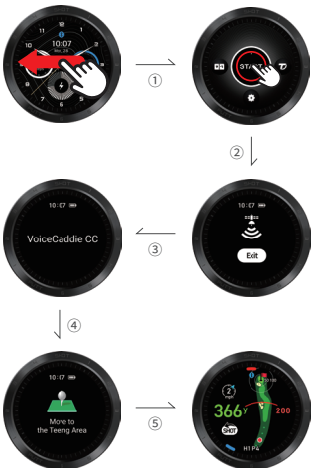
## Entering Golf Mode

Two ways to enter Golf Mode

1. Activate Start Right Away : Starts Golf Mode when the device is turned on.
2. Deactivate Start Right Away : Start by touching "Golf Mode" on the main screen.

\* Start Right Away option can be turned on/off in the settings.

\* UI can be changed due to a firmware update.



## Golf Mode Screen

---

| Course View screen displayed upon entering the Golf Mode

Swipe the screen to enter Approach View and Putt View.

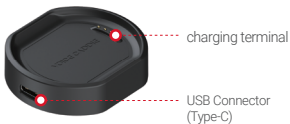


- Putt View is activated when the player enters the green.
- Yardage View screen will display when playing the course without the course map/green map database.
- Course image can vary depending on the region and the golf course.
- UI can be changed by updating the firmware.

# Charging Cradle

---

## | Part name/description



## | Charging

1. Connect the USB (Type-C) cable to the charging cradle.  
(USB Type-C cable is not included in the package)



2. Place the device on the Smart Cradle in the correct orientation to connect it.



## Supported functions with MyVoiceCaddie app

---

1. Wind direction and speed information
2. Club recommendationa and shot statistics by club
3. Flashback
4. UI/UX Customizing
5. Scorecard
6. Round tracking and round analysis
7. Latest golf course information update
8. Call, text, SNS notification

## Registered Trademark

---

1. RightsBluetooth is a registered trademark ofBluetooth SIG, Inc.
2. All other trademarks and copyrights are the property of their respective companies.

## Regulatory

---

Settings > About > Regulatory

# T11 PRO Product Specifications

Product	T11 PRO				
Main Functions	APL™, V-Algorithm™, Flashback, Action Key, Putt Guide, Course Preview, Putt View, Real Green Undulation, Shot & Putt Tracking, Automatic Shot Counter, Weather, MyVoiceCaddie App Support				
Size/Weight	<table border="1"><tr><td>Watch</td></tr><tr><td>50.0mm x 50.0mm x 16.1mm / 47.6g</td></tr><tr><td>Charging Cradle</td></tr><tr><td>49.2mm x 44.0mm x 12.6mm / 25.5g</td></tr></table>	Watch	50.0mm x 50.0mm x 16.1mm / 47.6g	Charging Cradle	49.2mm x 44.0mm x 12.6mm / 25.5g
Watch					
50.0mm x 50.0mm x 16.1mm / 47.6g					
Charging Cradle					
49.2mm x 44.0mm x 12.6mm / 25.5g					
Supported Courses	Golf Courses Worldwide (excluding some / over 800 domestic)				
Supported Languages	Korean, English, Japanese, Chinese				
Margin of Error	±3yd				
Operating Temperature	-20~50°C				
Wireless Specifications	Bluetooth (2402~2480 MHz)				
Components	Main body, Charging cradle, User manual				

## T11 PRO Quality Guarantee

---

- 1.This product is produced through strict quality management and thorough inspection processes. according to the consumer compensation regulation of the korea consumer agency, we compensate consumers for legitimate damages.
- 2.If a malfunction occurs during the warranty period under normal usage conditions, free service is available.
- 3.Even within the warranty period, if abnormalities occur due to user negligence, paid repairs may be possible.
- 4.When requesting after-sales service or damage compensation, please present this warranty certificate and proof of purchase (receipt).

## T11 PRO Precautions

---

- 1.The time taken to find satellites in Golf Mode may vary depending on the reception environment (weather, terrain). Please turn on Golf Mode outdoors (e.g., start plaza).
- 2.The battery usage time may decrease when used in areas with poor satellite reception or in cold weather.
- 3.Leaving the device in high-temperature areas such as a car during summer or in humid places like a golf bag may cause malfunctions.
- 4.Wearing the watch while taking a shower may cause malfunctions.
- 5.This device has been evaluated for suitability for use in business environments, and there may be concerns about radio interference when used in a home environment.



## Caution

---

- Reorient or relocate the receiving antenna.
  - Increase the separation between the equipment and receiver.
  - Connect the equipment into an outlet on a circuit different from that to which the receiver is connected.
  - Consult the dealer or an experienced radio / TV technician for help.
  - This device complies with part 15 of the FCC Rules. Operation is subject to the following two conditions: 1) This device may not cause harmful interference, and 2) This device must accept any interference received, including interference that may cause undesired operation.
  - Any changes or modifications not expressly approved by the party responsible for compliance could void the user's authority to operate this equipment.
  - The device has been evaluated to meet general RF exposure requirement.
  - The device can be used in portable exposure condition without restriction
- \* Risk of explosion if battery is replaced by an incorrect type. Dispose of used batteries according to the instructions.

## Caution

---

This equipment has been tested and found to comply with The limits for a Class B digital device, pursuant to part 15 of the FEE Rules.

These limits are designed to provide reasonable protection against harmful interference in a residential installation. This equipment generates, uses and can radiate radio frequency energy and, if not installed and used in accordance with the instructions, may cause harmful interference to radio communications. However, there is no guarantee that interference will not occur in a particular installation. If this equipment does cause harmful interference to radio or television reception which can be determined by turning the equipment off and on, the user is encouraged to try to correct the interference by one or more of the following measures:

## Warranty

---

1. This product has been produced through strict quality control and thorough inspection. In accordance with the Consumer Damage Compensation Regulations announced by the Ministry of Finance and Economy, we will properly compensate consumers for damage.
2. You can receive free service in case of a malfunction that occurs under normal use within the warranty period.
3. When requesting after-sales service and damage compensation, be sure to present this warranty and proof of purchase (receipt).

# Warranty

Product Name	VOICE CADDIE T11 PRO
Serial No.	
Purchase Date	
Dealer	
Dealer Contact	
Buyer's Name and Contact	
Free Warranty Period	For one year after the purchase of the product (6months for components)
Exchange and Refund Period	Within 14days of product purchase in unused condition

## Battery Duration

- Average duration in Watch Mode : about 2 days
- Average duration in Golf Mode: about 36 holes of play

\* Battery life may vary depending on usage and enviromental factors.



Call : 562-926-3978  
6940 Aragon Cir Suite 10  
Buena Park, CA 90620